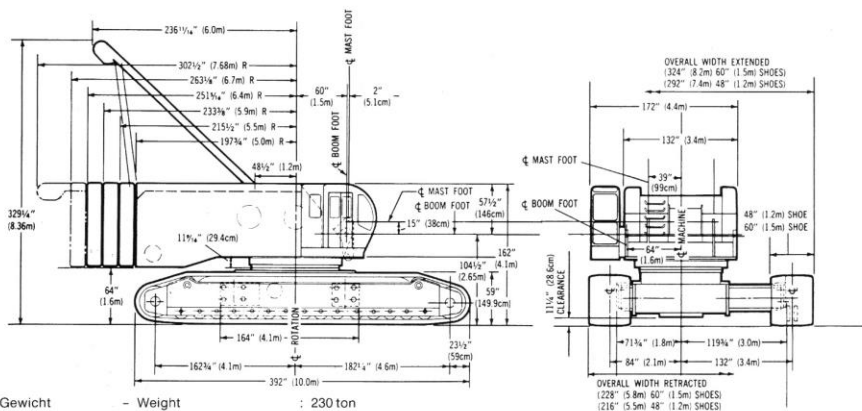


RUPSKRAAN
CRAWLER CRANE

300 TONS (A.R.)
P&H 5300 R



Gewicht - Weight : 230 ton
Gem. grondruk - Average groundpressure : 0.84 kgF/cm²

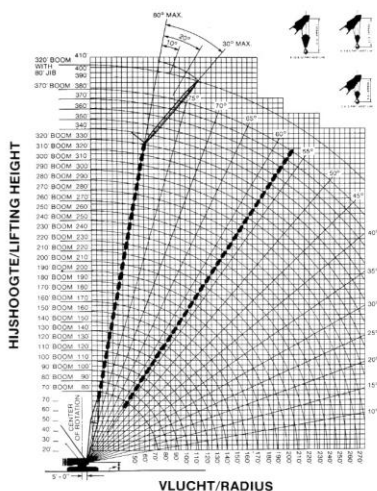
RUPSKRAAN
CRAWLER CRANE

300 TONS (A.R.)
P&H 5300 R

JIB (1,1 m x 1,1 m) CAP. IN TONS



Jiblenkte in meters	Jiblenkte in meters					
	9.1	12.2	15.2	18.3	21.3	24.4
10°	18.76	16.78	13.54	10.34	8.34	6.80
20°	18.76	14.40	14.45	8.98	7.09	5.71
30°	17.01	13.06	10.52	8.39	6.62	5.32



HEAVY DUTY TIPSECTION, BOOM 94"

LAST IN TONNEN OP 75%, 360° - LOAD IN TONS AT 75%, 360°

Vlucht in ft/m Radius in ft/m	Gieklenkte in ft/m - Boomlength in ft/m																											
	70'	80'	90'	100'	110'	120'	130'	140'	150'	160'	170'	180'	190'	200'	210'	220'	230'	240'										
	21.4	24.4	27.4	30.5	33.5	36.6	39.6	42.7	45.7	48.8	51.8	54.9	57.9	61.0	64.0	67.0	70.1	73.2										
18'	5.48	272.4																										
20'	6.10	246.3																										
25'	7.62	200.1	200.1	193.8	181.6																							
30'	9.14	145.5	145.5	145.4	145.4	145.1	144.9	136.2																				
35'	10.66	113.9	113.8	113.8	113.7	113.4	113.3	113.0	113.0	112.9	113.3																	
40'	12.19	93.3	93.2	93.2	93.0	92.6	92.4	92.2	92.1	91.9	91.7	91.5	91.3	91.0														
45'	13.71	78.8	78.7	78.6	78.4	78.0	77.8	77.6	77.5	77.3	77.1	76.9	76.6	76.4	76.4	76.1	75.9											
50'	15.24	68.1	67.9	67.8	67.6	67.2	67.0	66.8	66.7	66.5	66.3	66.1	65.8	65.6	65.6	65.3	65.0	64.8	64.4									
60'	18.28	53.2	53.0	52.9	52.7	52.3	52.1	51.8	51.7	51.5	51.3	51.1	50.8	50.6	50.5	50.3	50.0	49.8	49.5									
70'	21.33	43.4	43.2	43.0	42.8	42.4	42.2	41.9	41.9	41.7	41.4	41.0	40.9	40.7	40.6	40.4	40.1	39.9	39.6									
80'	24.38		36.3	36.1	35.9	35.5	35.2	34.9	34.9	34.7	34.4	34.2	33.9	33.7	33.6	33.3	33.1	32.8	32.6									
90'	27.43			30.9	30.7	30.3	30.1	29.8	29.7	29.5	29.2	28.9	28.7	28.5	28.4	28.1	27.8	27.6	27.8									
100'	30.48				26.7	26.3	26.1	25.7	25.7	25.4	25.2	24.9	24.7	24.4	24.3	24.1	23.8	23.5	23.3									
110'	33.52							22.9	22.6	22.5	22.2	21.9	21.7	21.5	21.2	21.1	20.8	20.6	20.3	20.1								
120'	36.57							20.3	20.0	19.9	19.6	19.4	19.1	18.9	18.6	18.5	18.2	17.9	17.7	17.4								
130'	39.62								17.9	17.8	17.5	17.3	16.9	16.7	16.4	16.3	16.0	15.7	15.5	15.2								
140'	42.67									16.1	15.7	15.4	15.2	14.9	14.6	14.5	14.2	13.9	13.7	13.4								
150'	45.72										14.3	13.9	13.7	13.3	13.1	12.9	13.5	12.4	12.1	11.8								
160'	48.77											12.7	12.3	12.1	11.7	11.6	11.3	11.0	10.7	10.5								
170'	51.82												11.3	10.9	10.7	10.5	10.1	9.9	9.6	9.3								
180'	54.86													10.0	9.7	9.5	9.1	8.9	8.6	8.3								
190'	57.91														8.9	8.6	8.3	8.0	7.7	7.4								
200'	60.96															7.9	7.5	7.2	6.9	6.6								
210'	64.00																6.9	6.5	6.2	5.9								
220'	67.05																	6.0	5.6	5.3								
230'	70.10																			5.1	4.8							
240'	73.15																				4.4							

Kraan kan uitgerust worden met andere giekoppen en zware beweegbare mastkop.
Crane can be equipped with other tipsections and heavy duty fly tipsection.